



The role of routine population health monitoring in policy formation: an introduction of why (and how) public health reporting can support decision making

EPHC pre-conference: Sharing health information & evidence with policy makers

1. November 2017 | Stockholm | Dr. Nicole Rosenkötter, EUPHA PHMR, LZG.NRW



**P o p u l a t i o n H e a l t h
M o n i t o r i n g a n d R e p o r t i n g
I S M A I N S T R E A M**



It is acknowledged that a solid information base is relevant for policy making...

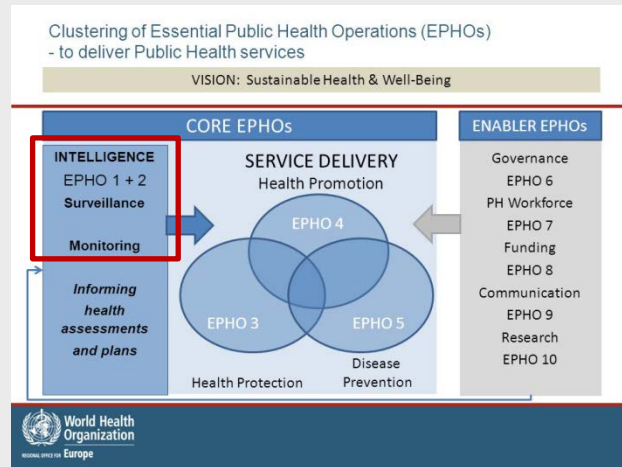


Table 32: Average scores for each component

Knowledge Development			
Component	Health information and monitoring systems	Public health reporting	Research and knowledge infrastructures
EU average	4.5	4.3	4.5
Standard deviation (SD)	1.2	1.2	1.1

Strengths

- Relatively sophisticated knowledge on the health of the population in EU Member States through national and regional health information systems
- Strong professional expertise and capacity in universities and research institutes to carry out evidence-based research, oriented towards establishing effectiveness of public health and health promotion policies and practice (if financial funds are available)
- Some governmental mechanisms to support high quality postgraduate public health research, such as postdoctoral programmes





„Good surveillance does not necessarily ensure the making of the right decisions, but it reduces the chances of wrong ones.“

Langmuir A, 1963

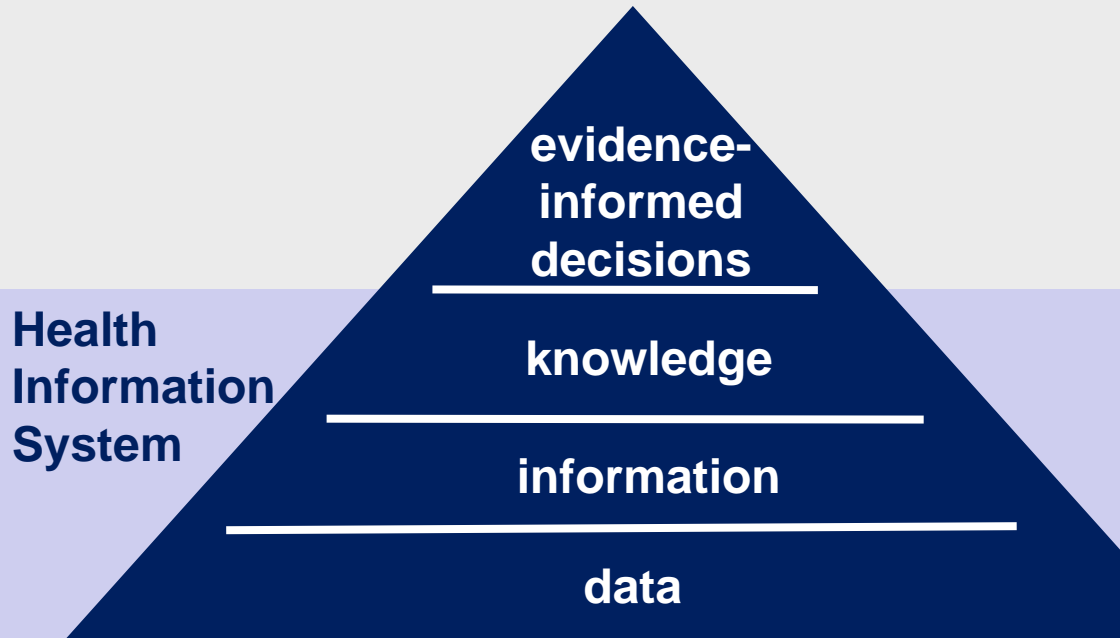


Source:

http://www.rivm.nl/en/Documents_and_publications/Common_and_Present/Newsmessages/2017/Trend_scenario_PHF_2018_identifies_societal_challenges_for_the_future



Components of a health information system

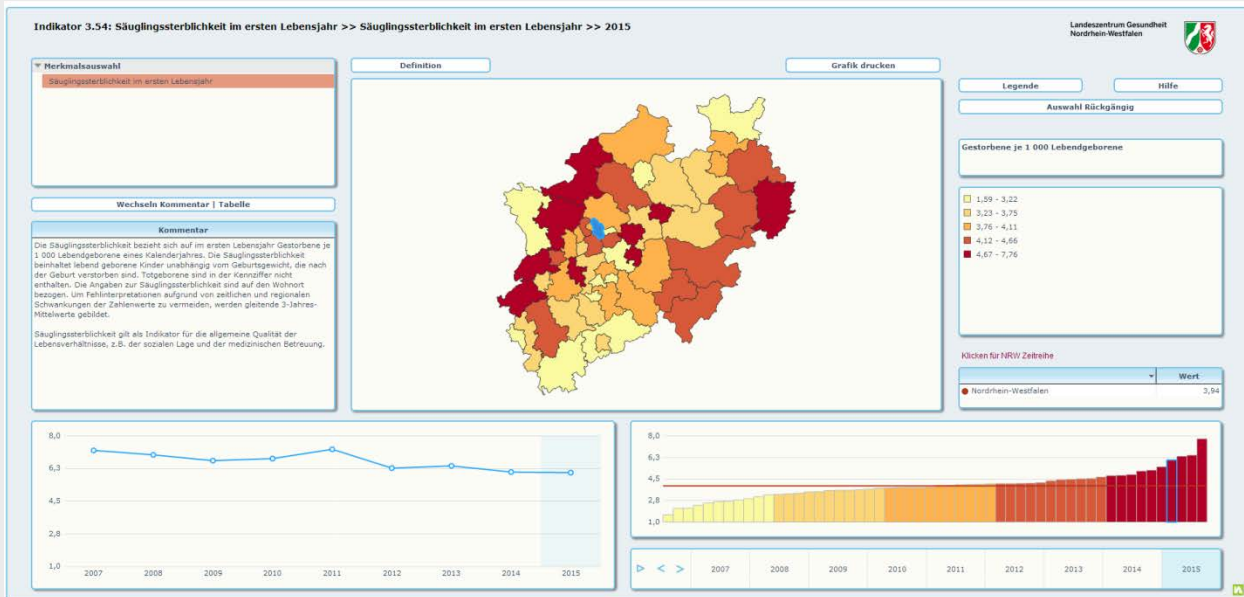


routine tasks

- knowledge transfer
- public health reporting
- calculation and visualisation of health indicators
- data processing
- data collection



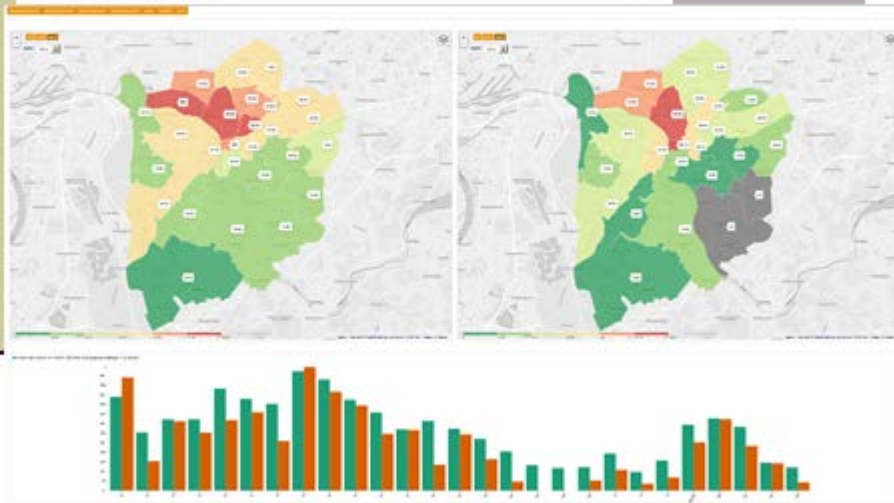
How to support decision making: starting the dialogue



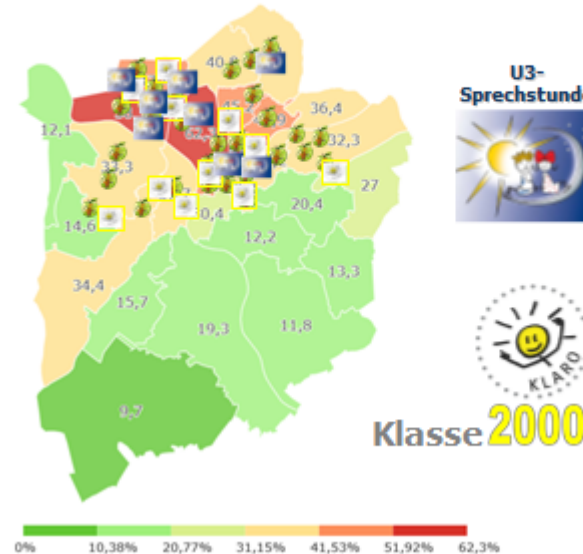
How to support decision making: show health and social information

"Kein Sport im Verein"

Kinderarmut und



Sozialraumorientierung beim Angebot
gesundheitsfördernder Maßnahmen



Klasse 2000

Gesundheitsförderung in Kindertageseinrichtungen

Präventionsangebote für Kinder in Mülheim an der Ruhr

ERNÄHRUNG
BEWEGUNG
ENTSPANNUNG

Logo for Mülheim an der Ruhr and MGB



**Population Health
Monitoring and Reporting
is MAINSTREAM**

**...but how can we improve its
impact, translation, uptake ...**

...especially beyond the health sector



...the challenge to strengthen impact generation ...and to generate impact for intersectoral actions

Table 36: Strengths and weaknesses for Knowledge Development

Knowledge Development	
<p>Strengths</p> <ul style="list-style-type: none"> Relatively sophisticated knowledge on the health of the population in EU Member States through national and regional health information systems Strong professional expertise and capacity in universities and research institutes to carry out evidence-based research, oriented towards establishing effectiveness of public health and health promotion policies and practice (if financial funds are available) Some governmental mechanisms to support high quality postgraduate public health research, such as postdoctoral programmes 	<p>Weaknesses</p> <ul style="list-style-type: none"> Links between public health reporting and policy formulation are weak Health reporting often is no part of a policy cycle but more of an isolated procedure. Institutionalised follow-up, evaluation and adaptation of assessments respectively are missing in many cases Weak capacity to monitor and evaluate public health and health promotion programme implementation exist in some countries Funding for public health research is inadequate and health research is often dominated by a medical approach Public health issues rarely considered in the development of research programmes or the decisions on which science to fund (STEPS, 2011) No European overview of university departments undertaking public health research (STEPS, 2011) Weak coordination between the Ministries of Science, Education and Finance to develop public health sciences in universities and institutes of public health (STEPS, 2011)

Review
of Public Health Capacity
in the EU

Maastricht University EUPHA

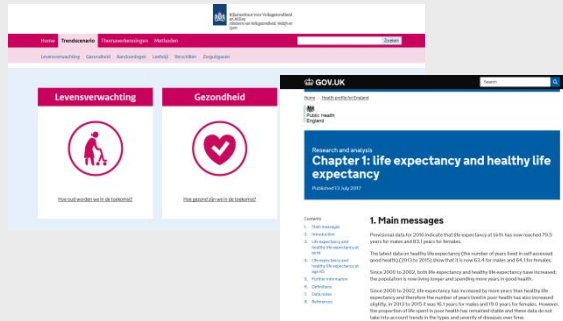
“To enhance the contributions made by an established public health report, such as the PHSF Report, it is insufficient to raise the awareness of potential users. The knowledge product must be geared to policy-makers’ needs and must be introduced into the scenarios of actors who may be less familiar. The demand for knowledge product adaptations has to be considered. This requires continuous alignment efforts in all directions: horizontal and vertical, external and internal.”



...the challenge to apply modern reporting and dissemination approaches

...the online presentation of reports

...different dissemination formats



and intersectoral reporting actions



and dissemination channels





Population Health
Monitoring and Reporting
is **MAINSTREAM**

and POWERFUL
...also across sectors

...additional label for the future?



Sources Slide 11

Online presentation of reports

- RIVM - trendsenarios <https://www.vtv2018.nl/trendscenario>
- Public Health England - Health profiles <https://www.gov.uk/government/publications/health-profile-for-england/chapter-1-life-expectancy-and-healthy-life-expectancy>

SDGs

- World Health Organization, picture via [http://www.thelancet.com/journals/lancet/article/PIIS0140-6736\(16\)31635-X/fulltext](http://www.thelancet.com/journals/lancet/article/PIIS0140-6736(16)31635-X/fulltext)
- EC/OECD, Infographic Health at a Glance https://ec.europa.eu/health/sites/health/files/state/docs/health_glance_2016_infograph_en.pdf
- EC, video Health at a Glance https://ec.europa.eu/health/state/glance_en

Pictures Twitter, YouTube, Facebook

- <http://www.stickpng.com/img/icons-logos-emojis/tech-companies/twitter-logo>
- <http://www.stickpng.com/img/icons-logos-emojis/tech-companies/youtube-logo>
- <http://www.stickpng.com/img/icons-logos-emojis/tech-companies/facebook-icon>