



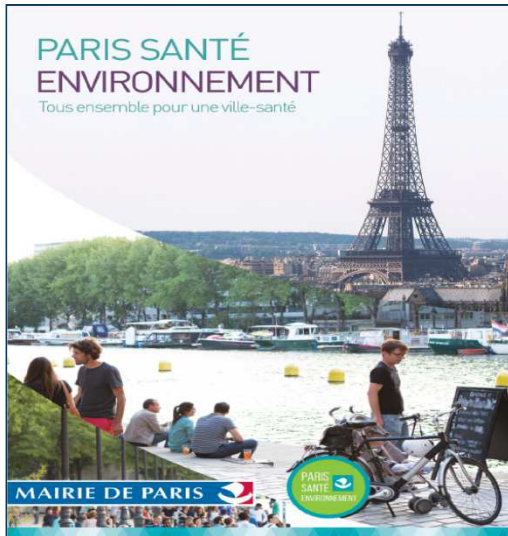
Towards a neighbourhood with positive health in a working class district of eastern Paris

Legout Céline, Trendel Estelle, Vernouillet Gabrielle,
Beaubestre Claude, Lefranc Agnès

Parisian Office for Environmental Health / City of Paris

EUPHA – Marseille, November 2019

CONTEXT (1)



A strong political mandate: the **Paris environmental health action Plan** – 2015, led by the city of Paris => 17 action sheets for a healthy City

- ✓ #1: A better integration of health concerns into urban planning projects
- ✓ # 2: Assess Health Impacts (HIA) for structuring urban projects and of public space requalification

- **Local Health Contract for Paris** (State - Region – City – Social Security) - 2018

« Integrate environmental health issues into urban planning policies »

- ✓ Promote the development of **Health Impact Assessments** on structuring urban projects
- ✓ Implement actions in areas of fragility due to **environmental exposures** and **socio-economic vulnerabilities**

CONTEXT (2) HIA in Paris

2017

Paris Region Institute –
Regional health observatory
City of Paris



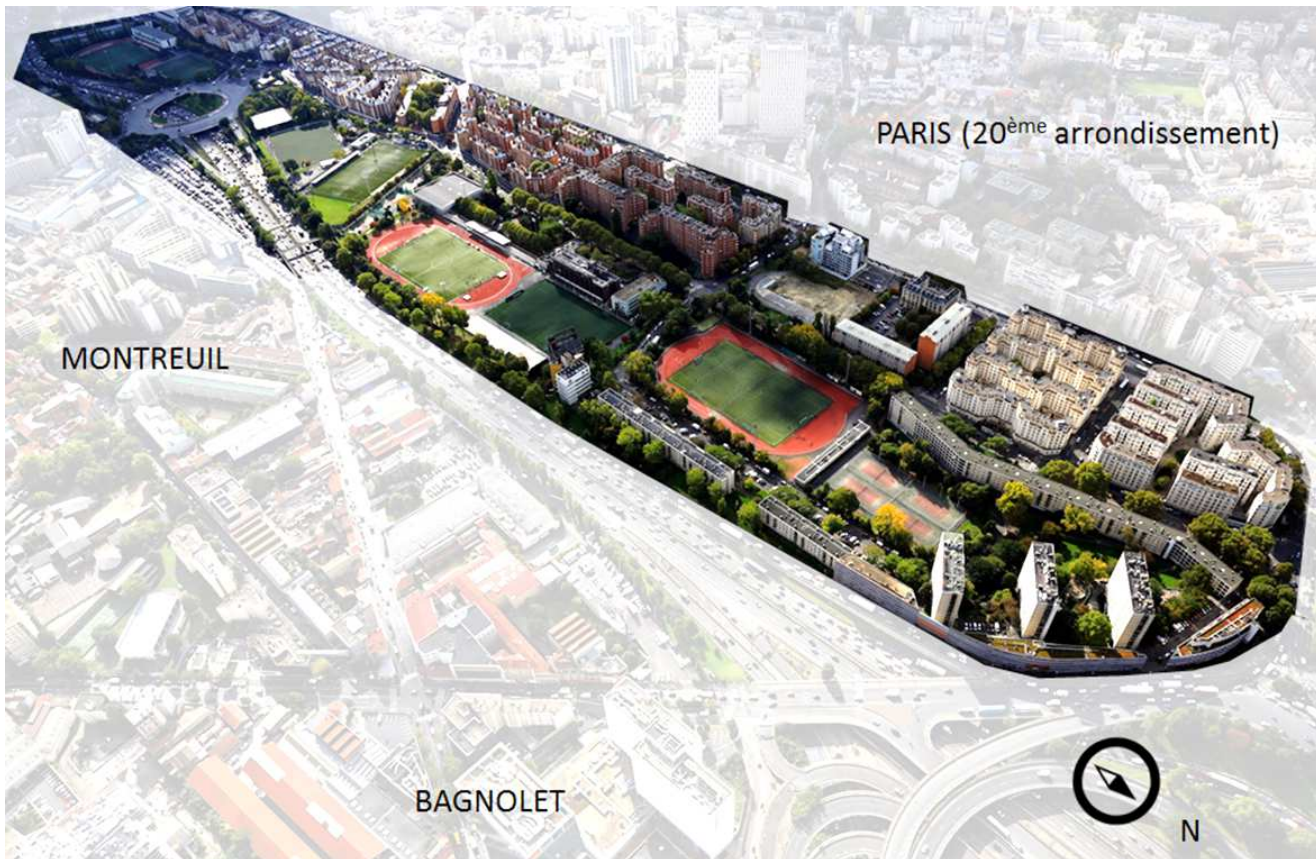
2018

**NORD
PARIS EST**
DE NOUVEAUX QUARTIERS
MÉTROPOLITAINS

2019



Focus on the « Porte du 20^{ème} » HIA: The NEIGHBOURHOOD (1)



- Priority neighbourhood in the City policy (19,000 inhabitants) : lower education and economic levels, social difficulties
- 100% social housing
- Not targeted by previous urban renewal operations
- Targeted by the National Urban Renewal Program 2014 - 2024

Focus on the « Porte du 20^{ème} » HIA: The NEIGHBOURHOOD (2)

Malfunctions



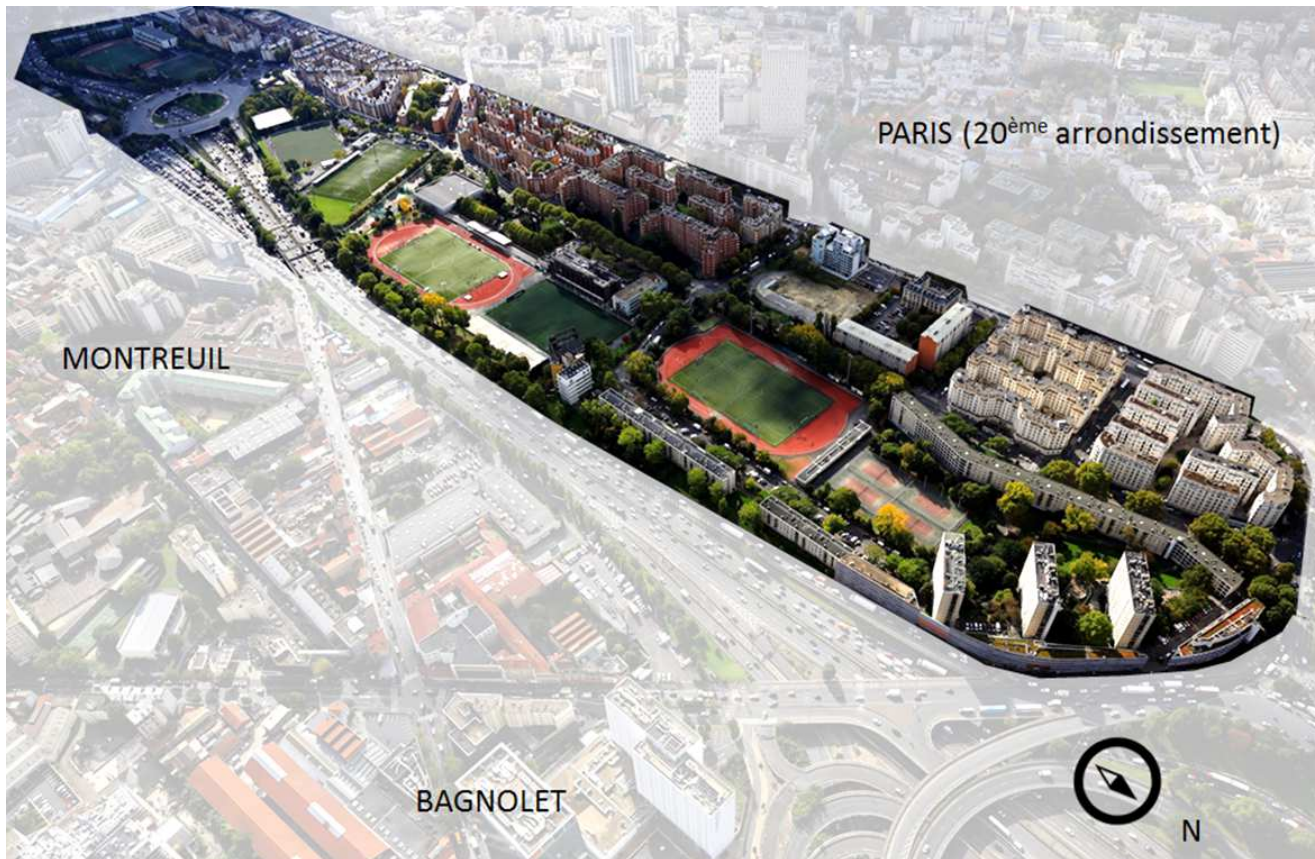
- Urban isolation and divides
- Environmental disturbances
- Residential mono-functionality : few shops, no doctor
- Waste, rodents

Assets

- Green belt of Paris (green parks)
- Architectural heritage
- Number and quality of sport and leisure facilities
- High potential for mobility and service



Focus on the « Porte du 20^{ème} » HIA: THE URBAN PROJECT (1)



Ambitions of the urban project

- ↘ Precariousness
- ↘ Environmental nuisances
- ↗ Security
- ↗ Access to employment
- ↗ Social and functional mixity

Focus on the « Porte du 20^{ème} » HIA: THE URBAN PROJECT (2)



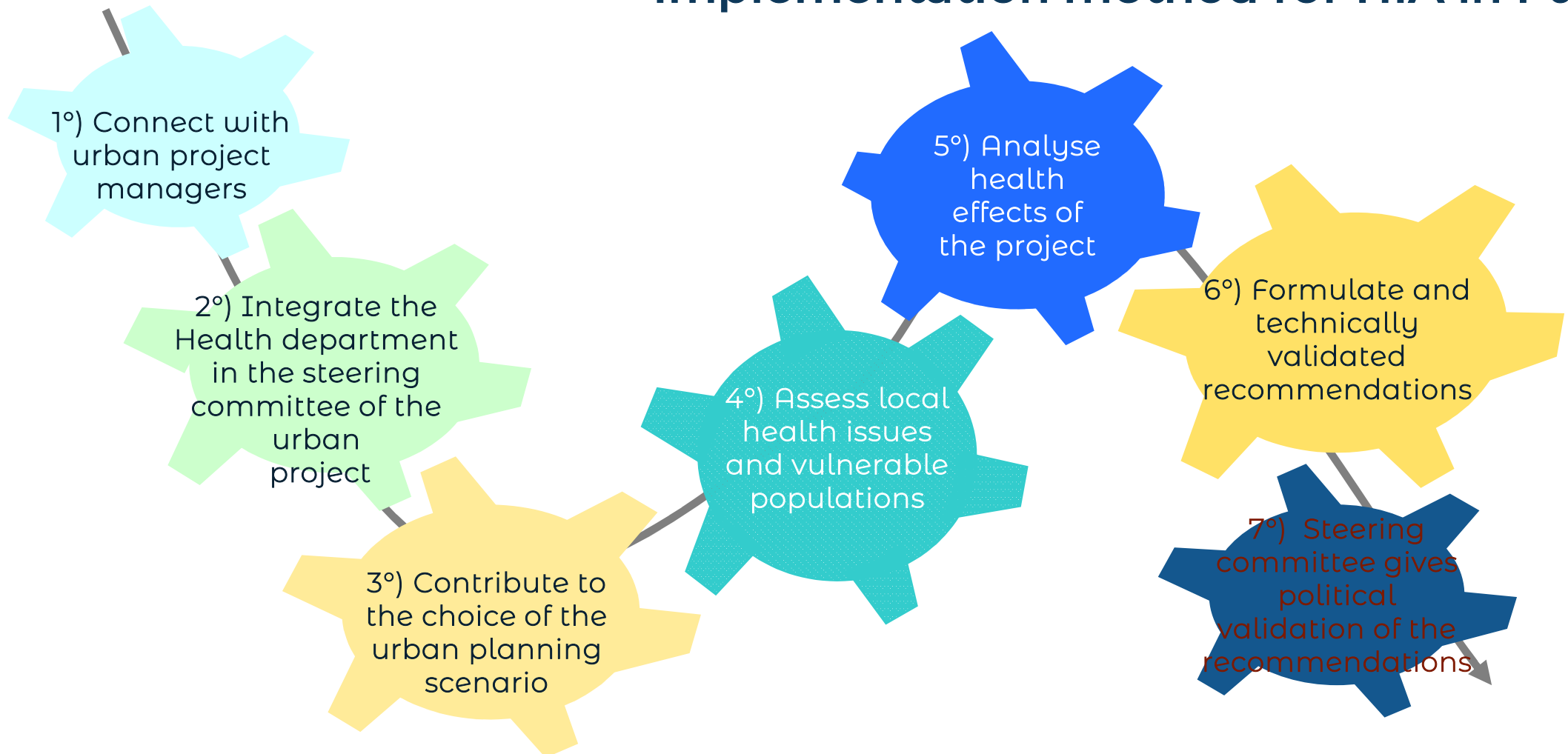
PYTHON-DUVERNOIS

- Demolition and rehabilitation of social housing
- Creation of an urban, landscaped and leisure park,
- Construction of a cluster of offices and economic activities creating jobs

PORTE DE MONTREUIL

- Crossing the ring road by a new attractive Place allowing active mobilities
- Pacify and plant the streets in islands of social housing
- Temporary constructions (services, shops, ...)

Implementation method for HIA in Paris



ASSESSMENT OF LOCAL HEALTH CHALLENGES AND VULNERABLE POPULATIONS (1)

How ?

Quantitative data:

- Demographic and socio-economic indicators (INSEE – IRIS)
- Health data from school health consultations
- Rodents control interventions, survey results in dwellings in the area
- Indoor air quality measurements

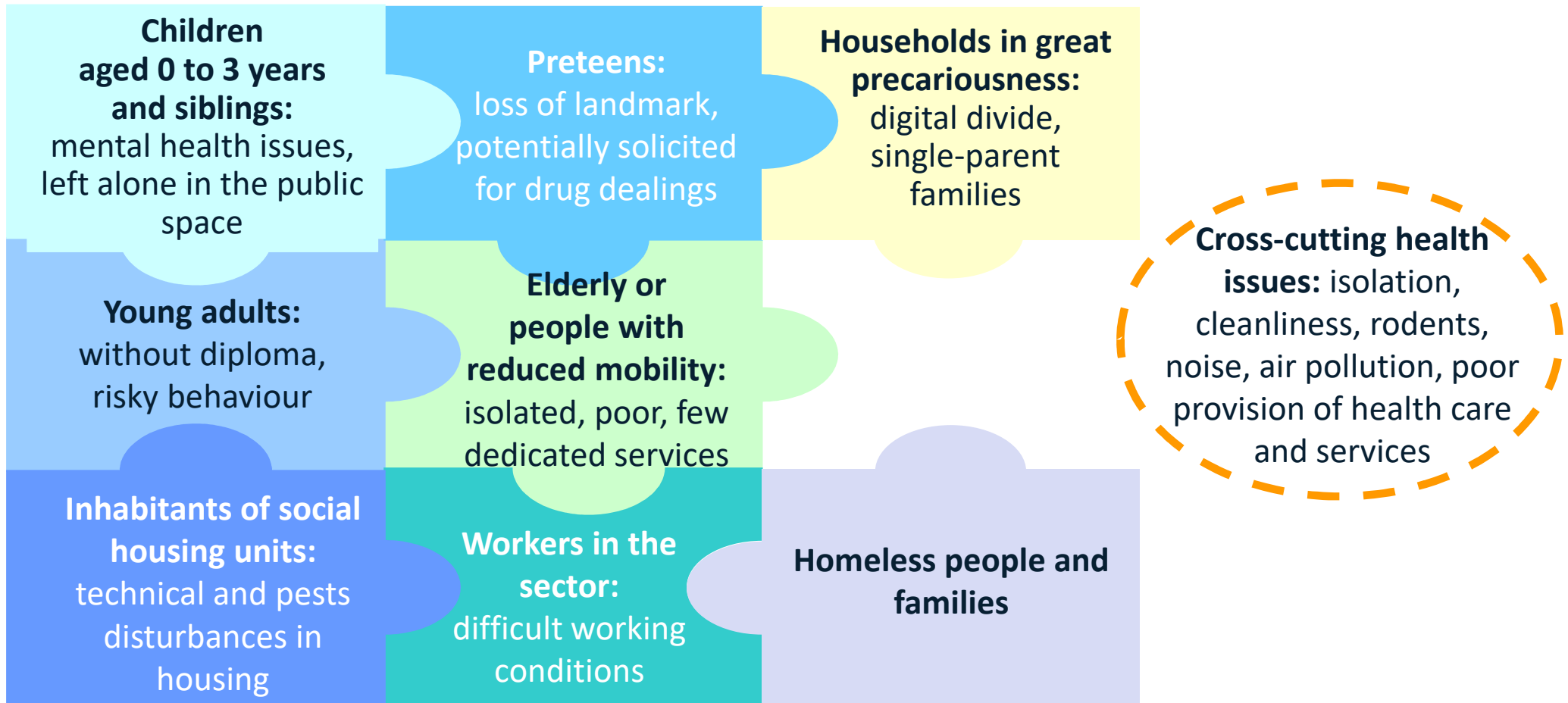
Qualitative data:

- Interviews with 38 institutions and local NGOs in contact with inhabitants
- Social “Portrait” and assessment of the local district (“arrondissement”)
- Concertation during the urban project

ASSESSMENT OF LOCAL HEALTH CHALLENGES

Results for the « Portes du 20^{ème} » HIA:

AND VULNERABLE POPULATIONS (2)



ANALYSIS OF THE EFFECTS OF THE URBAN PROJECT

Determinants of health

Behaviours and lifestyle:

- Physical activity and sports, active transportation
- Food/nutrition

Living conditions:

- Housing
- Urban renovation
- Employment

Living environment:

- Waste and pests
- Urban heat islands, Climate
- Green parks
- Safety, perceived safety
- Urban renovation

Economic environment:

- Economic development
- Access to health care and to other services

Physical environment:

- Air
- Noise

Social environment:

- Social cohesion
- Family and social connections

RECOMMANDATIONS (1)

ELABORATION

How ?

Proposals from inhabitants and associations
Expert proposals
Exploratory walks
Benchmark
Scientific articles

Co-development of recommendations between the HIA team and the departments that would be in charge of their implementation

43 recommendations translated into 100 operational actions submitted to the steering committee

Results : 99 operational actions selected

Examples :



Living environment (waste, pests, urban heat islands, green spaces, perceived safety)

Anti-rodent nudges
Water games, water sprays
Transparency of grills and fences



Living conditions (housing, jobs, income)

Low cost low maintenance equipment in dwellings
Commercial offer partly adapted to the purchasing power of households



Social environment (family and social connections, social cohesion)

Creation of a hybrid place "Living together"
Collaborative workshops for single-parents



Socio-economic environment (access to health care and services)

Creation of a public health center focused on childhood and parenthood
Elderlies : facilitation of home access to caregivers

RECOMMENDATIONS (3)

Implementation and monitoring



HIA recommendations on **urban planning**



HIA recommendations on **uses**



HIA recommendations on **accompanying policies**

Construction of an action plan by relevant technical departments, in close connection with elected officials and with the support of the HIA team

HIA team's support to the urban developer

Integration of the HIA recommendations in the concession agreement and specifications

FIRST FEEDBACKS AND EXPECTATIONS

Strenghts

- HIA done by the technical services of the City of Paris itself
 - Importance in raising awareness / advocacy
 - Flexibility to meet the deadlines
 - Mutualization of governance bodies
- Assessment of territory and populations

Difficulties

- Impacts assessment matrix
- Follow up on the implementation of the 99 actions

Review of this HIA

- Very positive feedback from the sponsors
- Currently: 2 others urban HIA in progress

Expectations expressed by the sponsors

- Measure the impact of HIA recommendations on the process, inhabitants' health and its determinants
- Partnership with researchers, state agencies
- Follow up during the construction phase



**THANK YOU
FOR YOUR ATTENTION**