



Pre-conference to the 12th European Public Health Conference

Health Impact Assessment (HIA) institutionalization and multisectoral collaboration in Europe

Legacy of Paris 2024 bid for Olympics and Paralympics Games : a rapid HIA

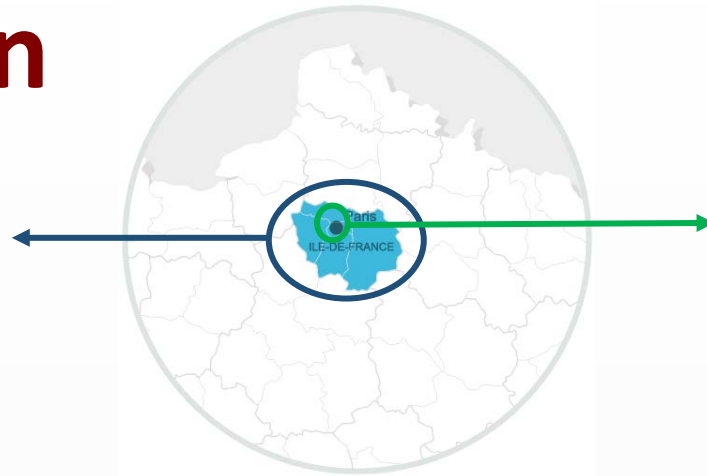
Muriel DUBREUIL, Regional Health Observatory (ORS), Institut Paris Region
Céline LEGOUT, Parisian environmental health service (SPSE), Paris City

Pré-conference to the 12th European Public Health Conference,
20th November 2019, Marseille Chanot



Introduction

ORS – Regional health observatory



SPSE (health – envt) Paris city

Sept. 2015

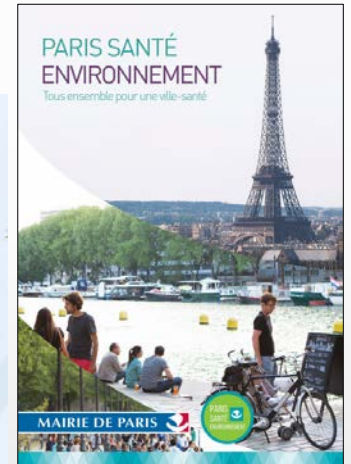
Paris Health Environment Plan

Since 2013 HIA devt + urban health



2013/2014

2015



Dec. 2015

→ **HIA devt.**

Olympic « legacy »

Anticipate what Olympic Games will leave to host territories

Tangible legacy

- Sports facilities
- Infrastructures improvement (transport, etc.)
- Urban renovations
- City embellishment, new amenities
- Etc.

Intangible legacy

- Environmental awareness
- New skills acquisition
- New behaviors
- Pride improvement
- Etc.

Source : IOC. Olympic Legacy, 2013

- **Iconic examples** of Olympic "legacy"
 - Barcelona 1992 : extensive urban renovation, neighborhood image change, etc.
 - Sydney 2000 : environment (green spaces, wildlife, waste systems, renewable energies)
 - London 2012 : sustainable food, urban park, sport practices
- **Paris 2024 bid** wants to promote a more active, sustainable and inclusive society

HIA initiators objectives

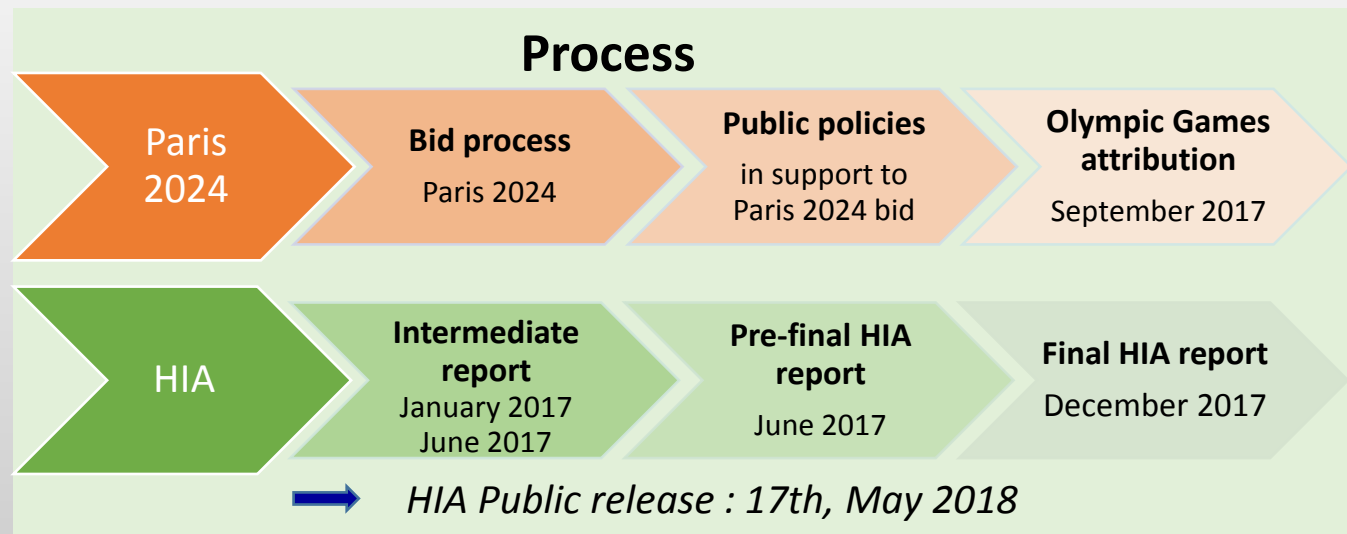
Initiators

- **City of Paris**
(health Deputy Mayor)
- **GIP Paris 2024**
(bid committee)

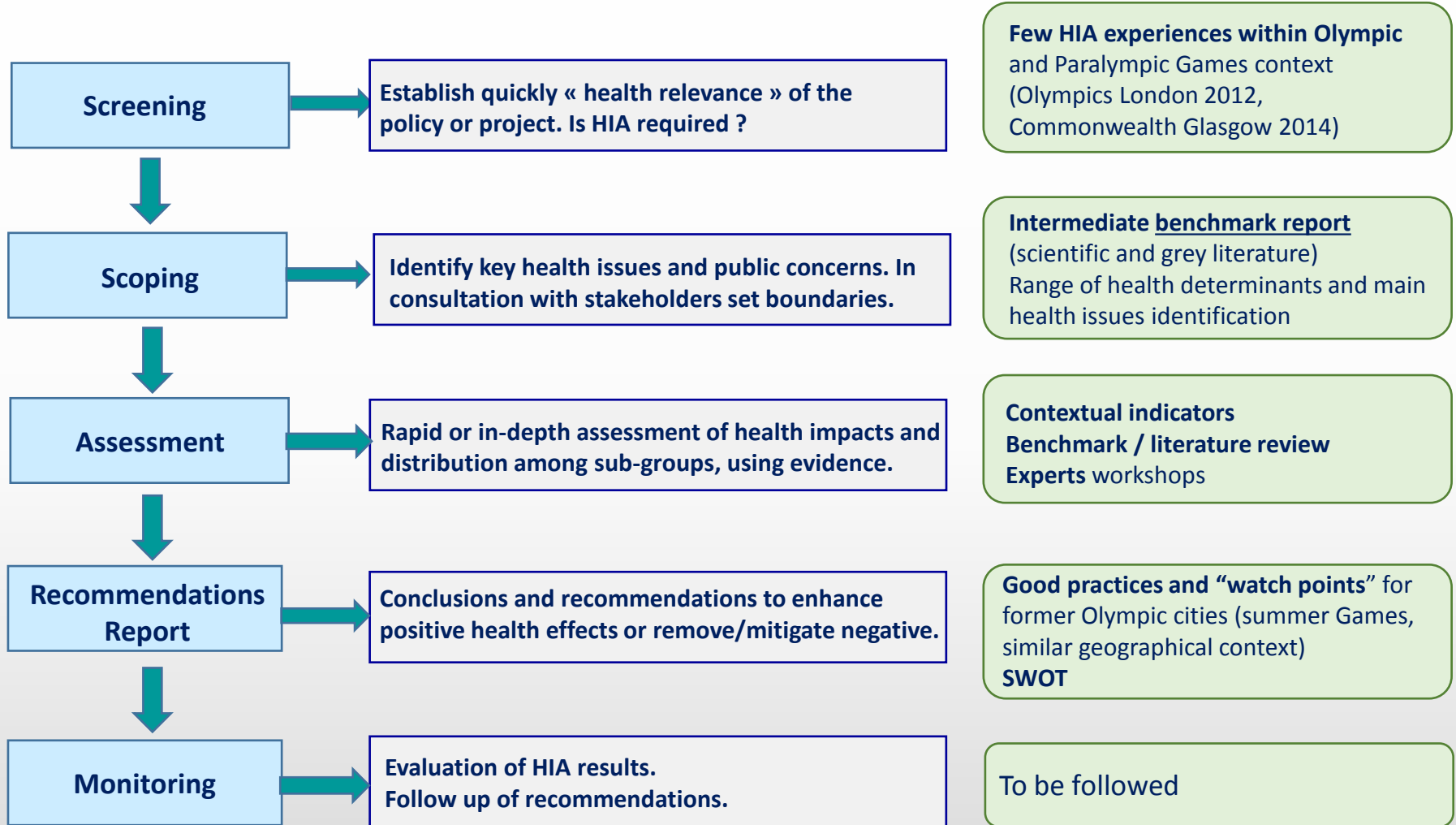
➔ *HIA steering committee*

HIA objectives

1. Identify, from the bidding phase, **Games effects on health and well-being** to anticipate them and be able to answer them
2. Provide **elements to strengthen** the exemplarity of Paris 2024 bid to Olympics and Paralympics Games
3. Contribute to widely **disseminating knowledge** about the determinants of health in public policies



HIA stages



The Merseyside Guidelines for Health Impact Assessment. Scott-Samuel, A., Birley, M., Ardern, K., (2001). Second Edition, May 2001. 20 p.

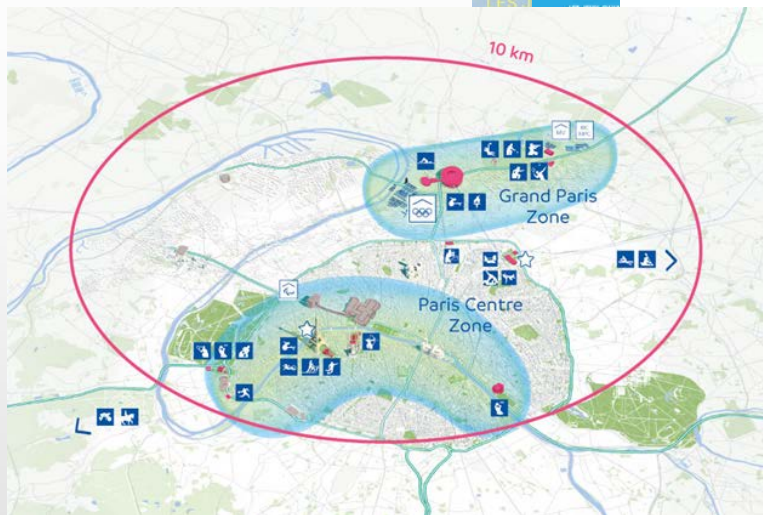
Scoping stage

Global project

- Paris 2024 bid documents
- Supportive policies (Paris 2024 four pillars)
- ✓ City of Paris : 43 measures
- ✓ Seine Saint Denis Department : 24 actions



Olympic sites (bidding phase)



Source : Paris 2024

Paris 2024 bid	
Legacy type	Components for HIA
Tangible Buildings, Infrastructures	a. Olympic sites
	b. Sporting equipments
	c. Public transport and active mobility
Intangible Individuals Communities Society	d. Seine river, banks and canals
	e. environmental excellence
	f. Economy, tourism
	g. Sport practice for all
	h. Youth mobilization citizenship
	i. Cultural mobilization

Source : HIA team - Paris 2024 bid legacy

HIA boundaries

- Geographical : « Grand Paris »
- Résident populations
- Exhaustive determinants of health

Prioritized components of Paris 2024 (3)

- Sport practice for all
- Employment and volunteering
- Sustainability strategy



**IN LEGACY,
A GREAT URBAN
REGENERATION PROJECT
PARIS – SEINE SAINT-DENIS**

KEY FIGURES

**OLYMPIC AND
PARALYMPIC VILLAGE**

- 2,300 FAMILY HOUSING
- 900 STUDENT ROOMS
- 2 HOTELS
- 100,000 M² OF OFFICES AND ACTIVITIES
- 25,000 M² OF SHOPS, ACTIVITIES ON GROUND FLOOR
- 9,000 M² OF NEW FACILITIES

MEDIA VILLAGE

- 1,300 FAMILY HOUSING
- 1 STUDENT RESIDENCE
- 1 SENIOR RESIDENCE
- 1 HOTEL

**PERMANENT VENUES
TO BE BUILT**

- PARIS ARENA E, ALREADY PLANNED
- AQUATICS CENTRE, BUILT FOR THE GAMES

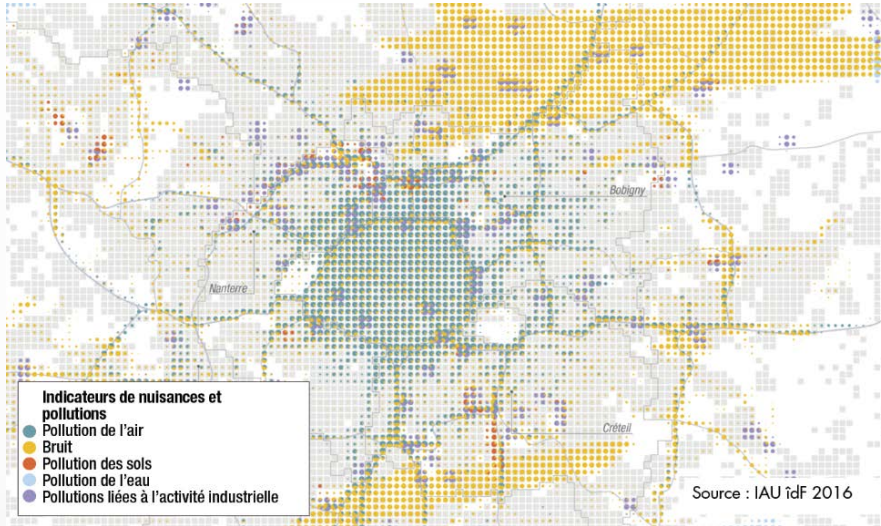
LEGEND

- Olympic venues
- Urban project
- Major equipments
- New trees
- Planned transport infrastructure
- Existing transport infrastructure

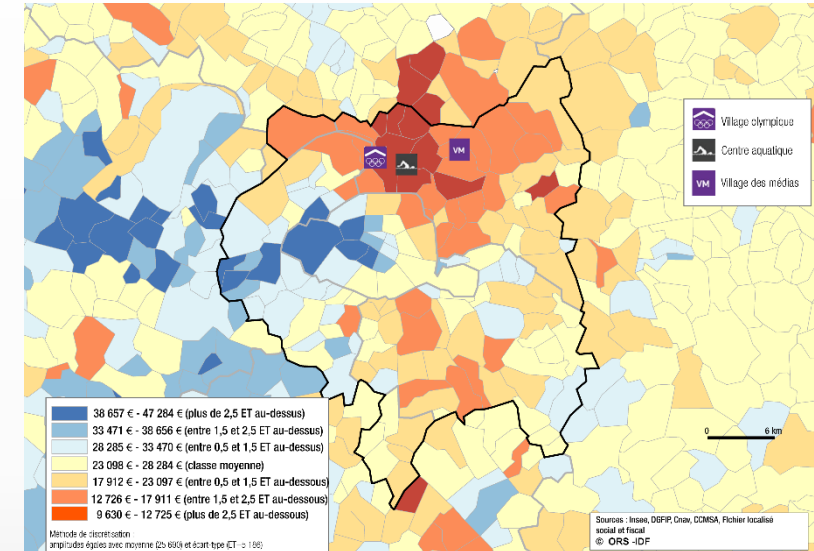
apur

Paris region : context and health

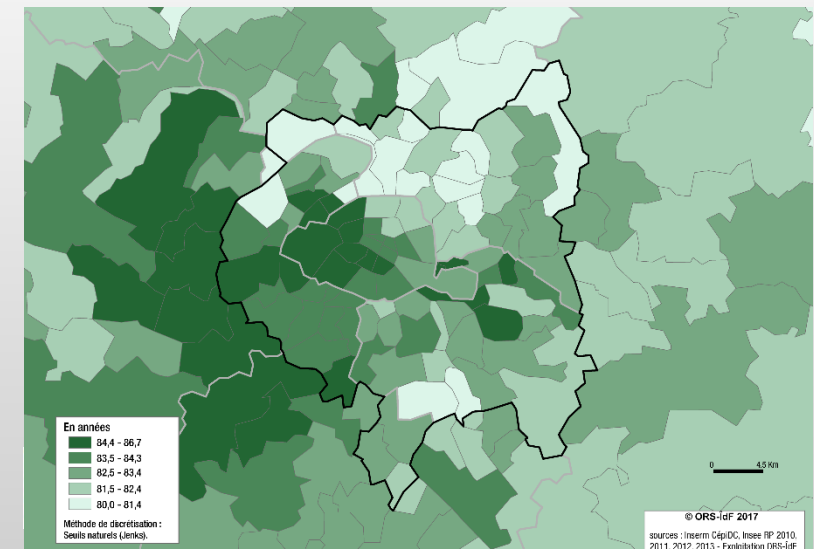
- Adverse environmental effects (2016)



- Median income per consumption unit (2013)

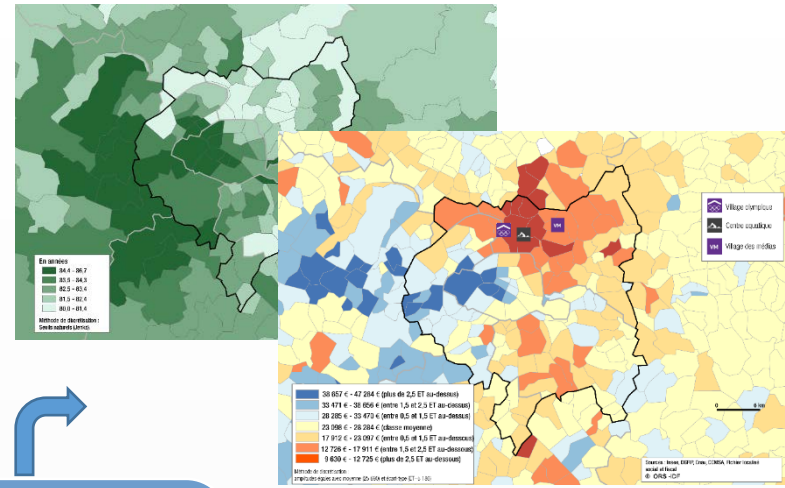
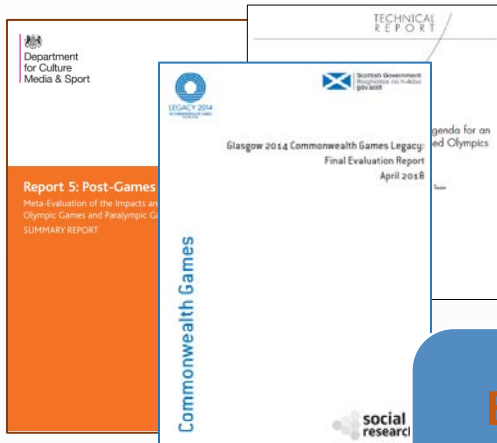


- Life expectancy at birth (2010 - 2013)



- French region where we live the longest: in 2014 the life expectancy of men (80.8 years old) and women (85.9 years) is the highest.
- But gap in life expectancy (men and women) : **6.5 years** between highest counties (86.6 years) and lowest counties (80.1 years) : mainly social and territorial health inequalities.

Data collection

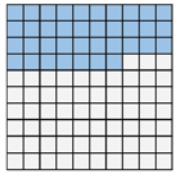


Paris 2024 : physical activity or sport

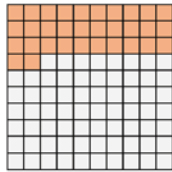
Paris 2024 (bid) aimed to put 10 million people to physical activity, to increase the number of young sport licensees by 20% and to place sport at the heart of French society.

Activité physique favorable à la santé* en France (2016)

Adultes



Plus de 65 ans



Moins de 37 % des adultes et 32 % des plus de 65 ans ont une activité physique favorable à la santé (Anses, 2016).

* 30 minutes d'activité physique ou sportive d'intensité modérée au minimum cinq fois par semaine pour les adultes

Key health issues

- Major determinant of quality of life and mortality reduction
- Positive effects in many chronic diseases
- Public who would benefit the most for their health, are often the least active

Benchmark

- Interventions at national and local level
- Less active audiences are least likely to be driven by the Olympic event
- Positive preliminary attitude towards the Games is an important driver

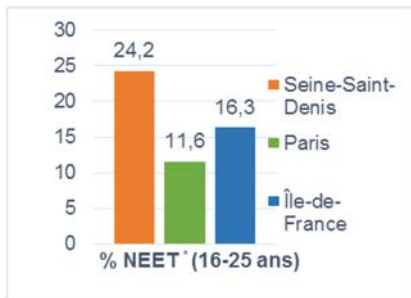
Experts

- Major importance of intersectoral collaboration (urban planning, transport, education, workplace, etc.)
- Living environments to make "conducive to physical activity"
- The time not dedicated to "recreational sport" to use as driver for action (urban transports, work, etc.)

Paris 2024 : employment and volunteering

Paris 2024 bid planned to create up to 250,000 jobs and mobilize 70,000 volunteers and 80,000 young civic services.

Jeunes déscolarisés et sans emploi - NEET* (2013)



* NEET (Neither in Employment nor in Education or Training) : indicateur développé par la commission européenne identifiant les jeunes ni en emploi, ni en études, ni en formation (Insee 2013, exploitation ORS ÎdF).

Key health issues

- Increased life expectancy, health and quality of life
- Deleterious effects of job insecurity and occupational exposures
- More at risk groups : construction, low-skilled young people, temporary workers

Benchmark

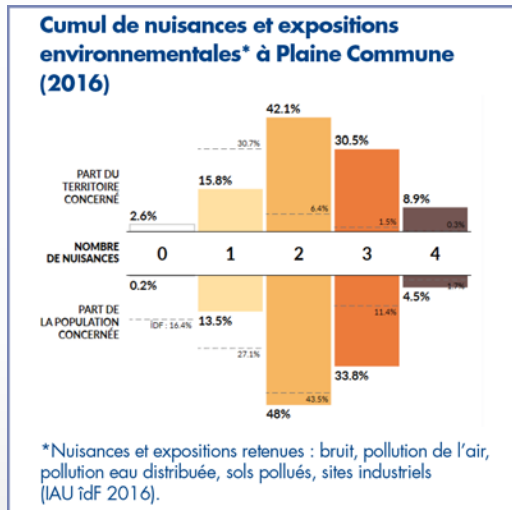
- Job creation (construction, tourism, events) in the short term
- Skills and network development by volunteering programs (if anticipated)
- Games opportunities often escape to the most disadvantaged

Experts

- Diversity of jobseeker situations to be integrated into actions
- Upstream training programs, outreach strategies, Olympic jobs tracking
- Recognition of professional skills in the context of Games volunteering

Paris 2024 : physical environment

Paris 2024 bid with its "sustainability strategy" aims at accelerating the energy transition, optimizing resources and developing healthy and sustainable lifestyles.



Key health issues

- Physical environment plays an important role in deterioration of health conditions
- Cumulative environmental and social inequalities lead to health impacts
- Co-benefits on health policies to mitigate climate change

Benchmark (former olympic cities) :

- New natural spaces conducive to health and well-being
- Training effect for a food strategy based on short circuits and ethical criteria
- Few sponsor initiatives related to sustainable development and environment

Experts

- Disseminate as widely as possible innovations generated by the event from Olympic sites to territories
- Induce a positive vision of health for all stakeholders
- Develop participatory approaches with population for expected behavioral changes

Cross-cutting issues of health and equity



Some population groups are, in the experience of host cities, **excluded** from the benefits of the Games (poorly housed, marginalized, homeless, etc.)



Urban transformations and **gentrification phenomena** that can be associated



Broad **public participation** would be important for citizen to recognize that the benefits but also the negative expected impacts from the Games will be shared equitably in society.

Anticipated health effects : synthesis

Components Paris 2024	Sub-components / actions	Health effects	Likelihood
Sustainability strategy	Climate	(+) et (-)	Possible
	Sustainable infrastructure, natural sites	(+) et (-)	Possible
	Circular economy and natural resources management	(+)	Possible
	Sustainable mobility	(+)	Probable
Sport practice for all	General population and young people	(+)	Probable
	Audiences away from physical activity and sport practices	(+)	Possible
	Urban development encouraging physical activity	(+) et (-)	Possible
	Work places – companies	(+)	Possible
Employment and volunteering	Job creation and business support	(+) et (-)	Probable
	Training and volunteering	(+)	Possible
	Social and socially responsible economy	(+)	Possible
	Professional reconversion of athletes	(+)	Probable

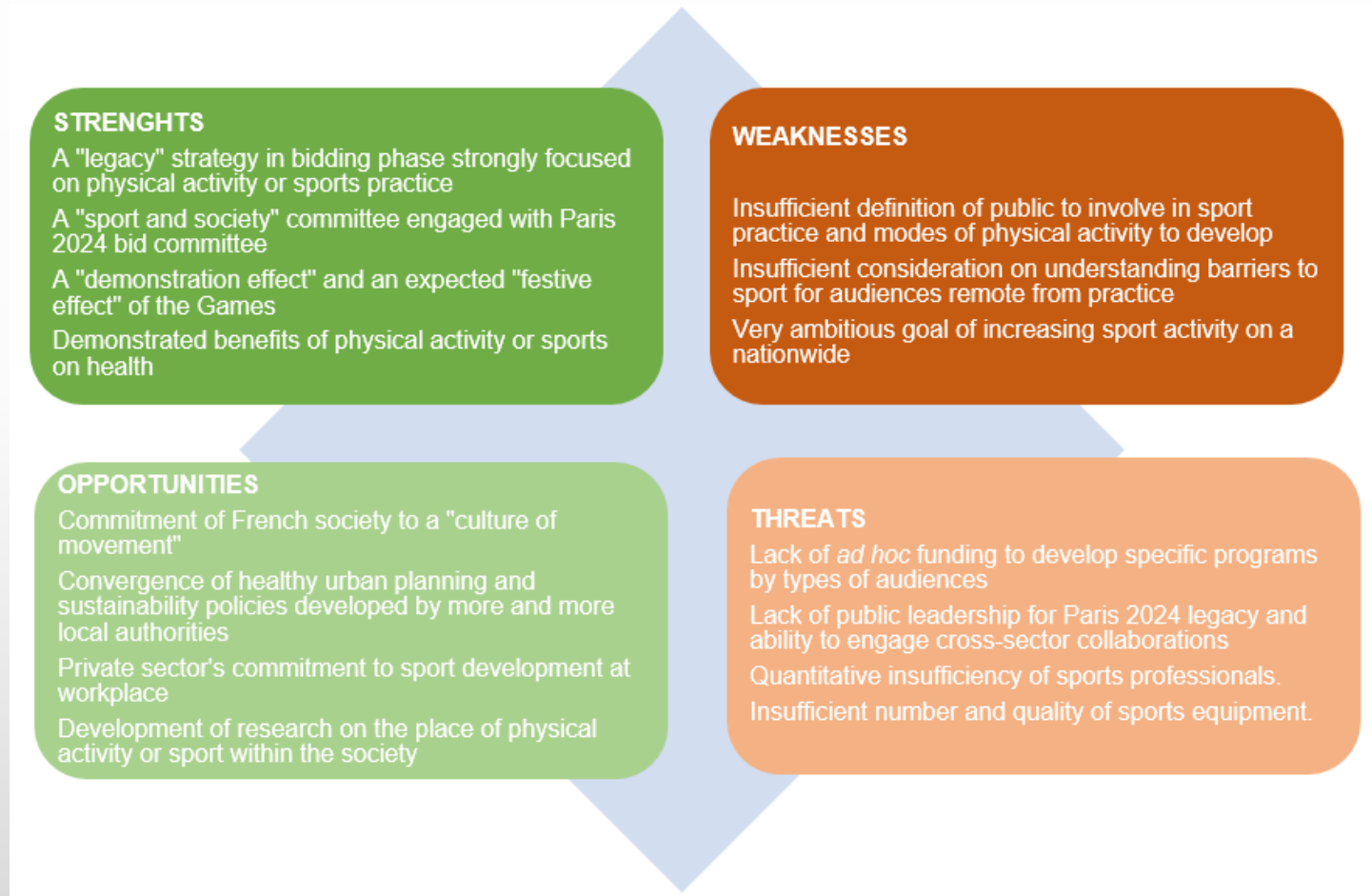
Source : HIA team - Paris 2024 bid legacy

Degree of certainty for occurrence :

- Definite : 75 à 100 %
- Probable : 50 à 75 %
- Possible : 25 à 50 %
- Speculative : 0 à 25 %

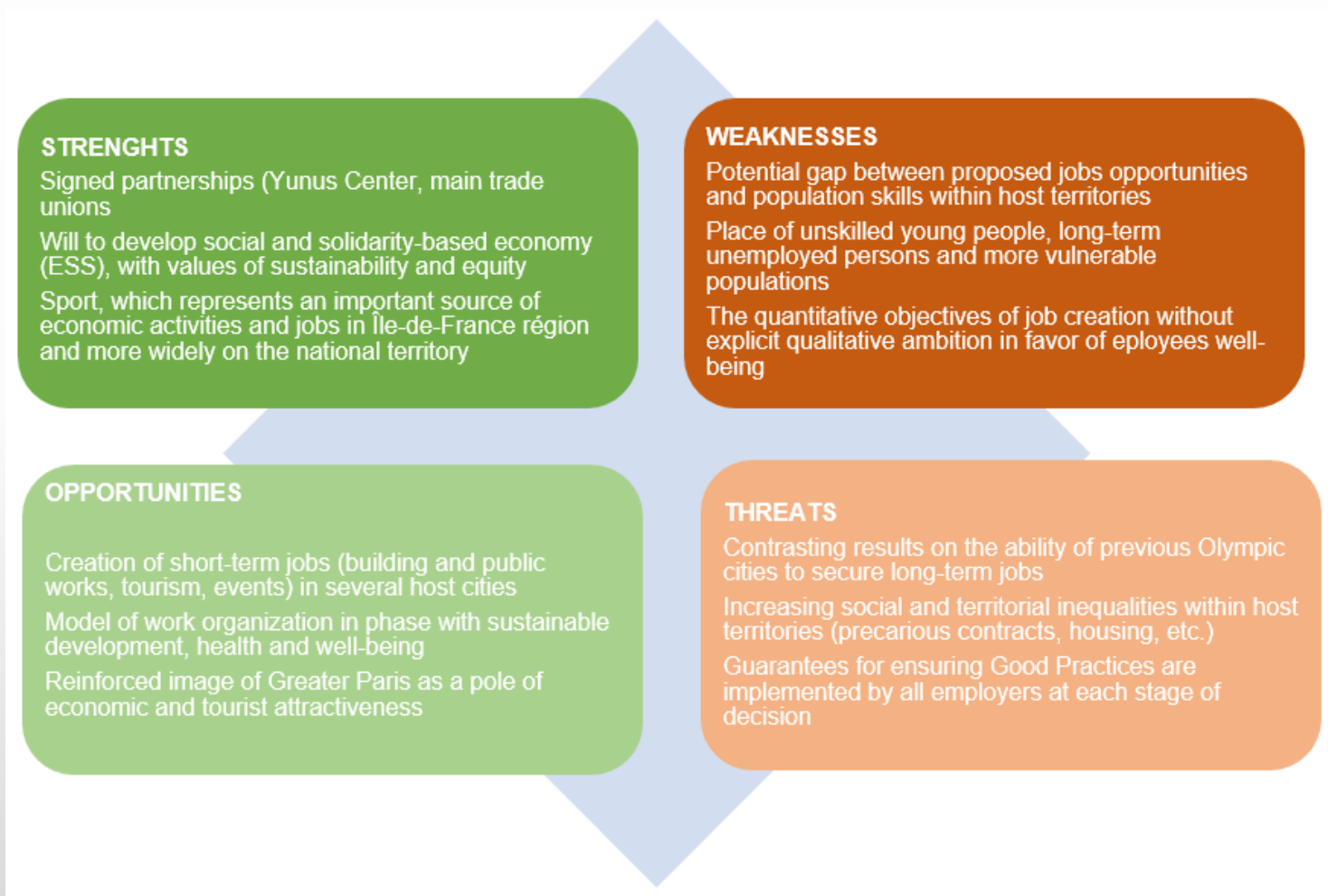
- Strong inequalities exist between different population sub-groups
- The set of health effects are not globally listed
- For completeness of results **please refer to the full HIA report**

Paris 2024 : physical activity or sport SWOT



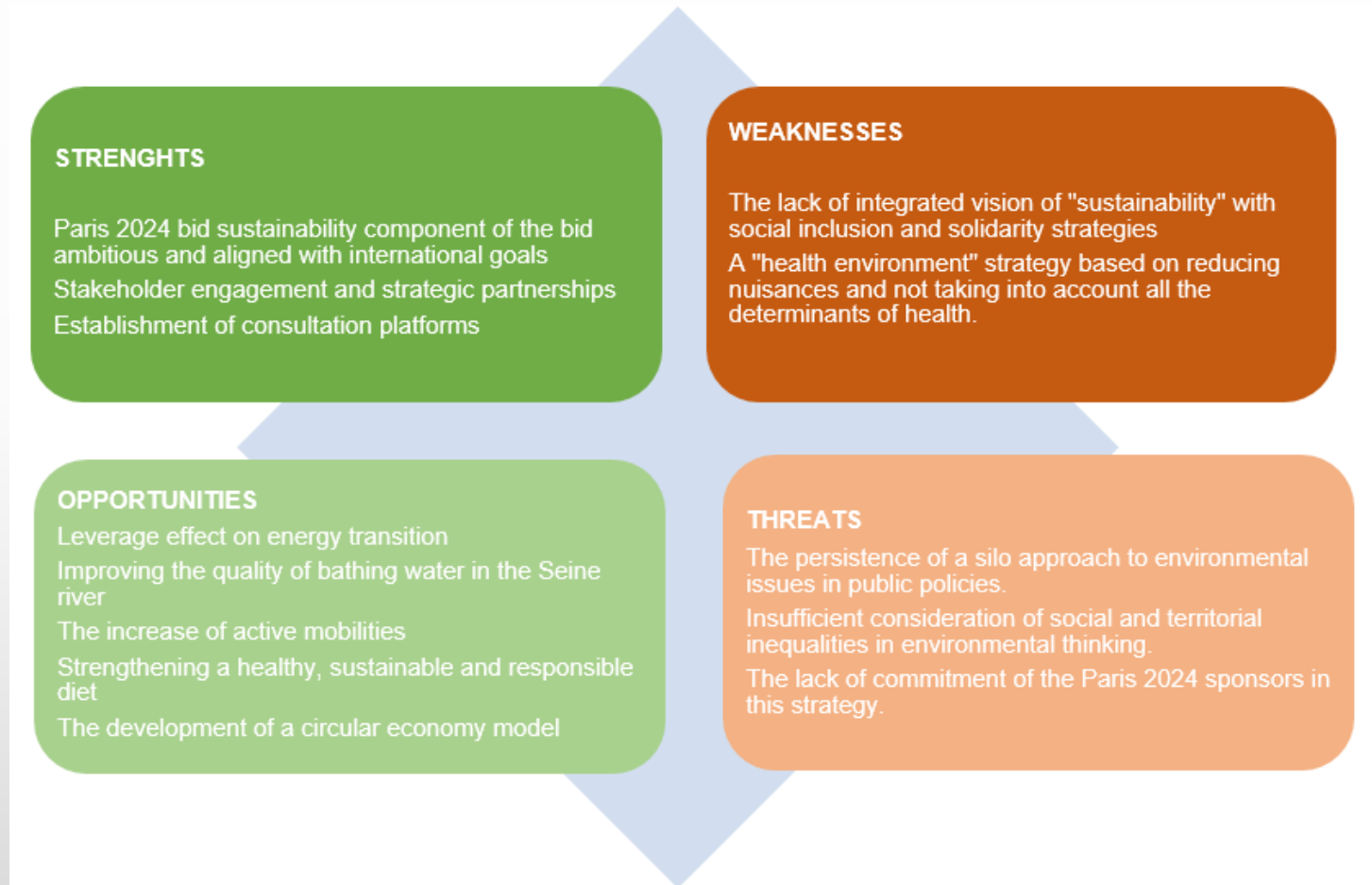
Source : HIA team - Paris 2024 bid legacy

Paris 2024 :employment and volunteering SWOT



Source : HIA team - Paris 2024 bid legacy

Paris 2024 : physical environment SWOT



Source : HIA team - Paris 2024 bid legacy

Recommendations by domains

Physical activity and sport

- The most sedentary public : profile? barriers? strategies?
- Health enhancing physical activity (HEPA) contexts
- Territorial specificities + intersectoriality
- Sport in business / work settings

Employment and volunteering

- Local business networks
- Occupational health prevention in economic sectors concerned
- Olympic jobs matrix + Olympic « work-study contract »
- Professional recognition of volunteering skills

Physical environment

- Anchoring with innovative territorial public policies + example value of the administration
- Public / private partnerships
- Territorial participatory approaches (Olympic sites)

Initiator point of view

“Impact and Heritage” Paris 2024

"The proposal for a quick HIA [...] seemed very interesting to us, in the reflection on measuring the impact of the Games, within the bid process.

- The **benchmarking** of Olympic cities, which brought new and innovative examples, expert consultation workshops and operational recommendations were particularly interesting contributions.
- We also greatly appreciated the **people-centered approach**, its life context and its health.
- HIA elements helped us to feed our strategy. On the one hand they confirmed the chosen approach and reinforced the initial approach, for example on the promotion of physical activity as a key factor for the health of populations; on the other, they allowed us to adjust our vision, for example in the context of volunteering. They also allowed us **to set priorities** [...].
- The HIA has also been a good opportunity to **associate research with the field situation** and to have a scientifically supported approach [...]"

September 2019

We want to thank the institutions that made this HIA possible

➤ Initiators



VILLE HÔTE

➤ Assessment team



ORS : www.ors-idf.org
City of Paris : www.paris.fr

➤ Acknowledgments

Impact & Legacy Paris 2024, Deputy Mayor of Paris in charge of Health, **all experts consulted** (special thanks to Jean SIMOS and Ben CAVE).