



# **The Villeneuves renovation program HIA**

**Lucie ANZIVINO**


**Observatoire régional de la santé Auvergne-Rhône-  
Alpes**

## Context

The Villeneuves, symbol of the architecture of the great ensembles of the 1970s

with some assets

- ☺ numerous pedestrian paths and footbridges between sectors
- ☺ numerous local equipment
- ☺ large, well-maintained green spaces with a lake (well-being and freshness)
- ☺ district very well served by public transport
- ☺ regular, well frequented markets
- ☺ many services (pharmacies, health centre and nursing home)
- ☺ important community life
- ☺ dense associative tissue



20 000 inhabitants  
8 000 dwellings,



## **Context**

The Villeneuves, symbol of many negative aspects

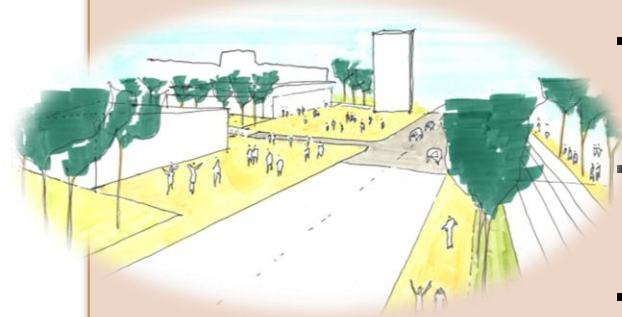
- ☹️ Difficult access to parks (isolation)
- ☹️ Places too mineral (heat islands)
- ☹️ Disadvantaged , degraded neighborhood, insalubrity
- ☹️ Complex road network difficult to cross by foot
- ☹️ Feeling of insecurity, especially for women
- ☹️ Degraded image, stigmatized neighbourhood
- ☹️ Use conflicts, youth groups at the foot of buildings and in public spaces
- ☹️ Drugs trafic
- ☹️ Health problems





## *Ambitions of the renovation program*

- opening to the city
- simplification of traffic
- requalification of the housing stock
- creation of living spaces
- renovation of public facilities
- enhancement green spaces



⇒ **change its image and attractiveness**

## ***HIA health determinants***



Green and public spaces



Urban design, mobility



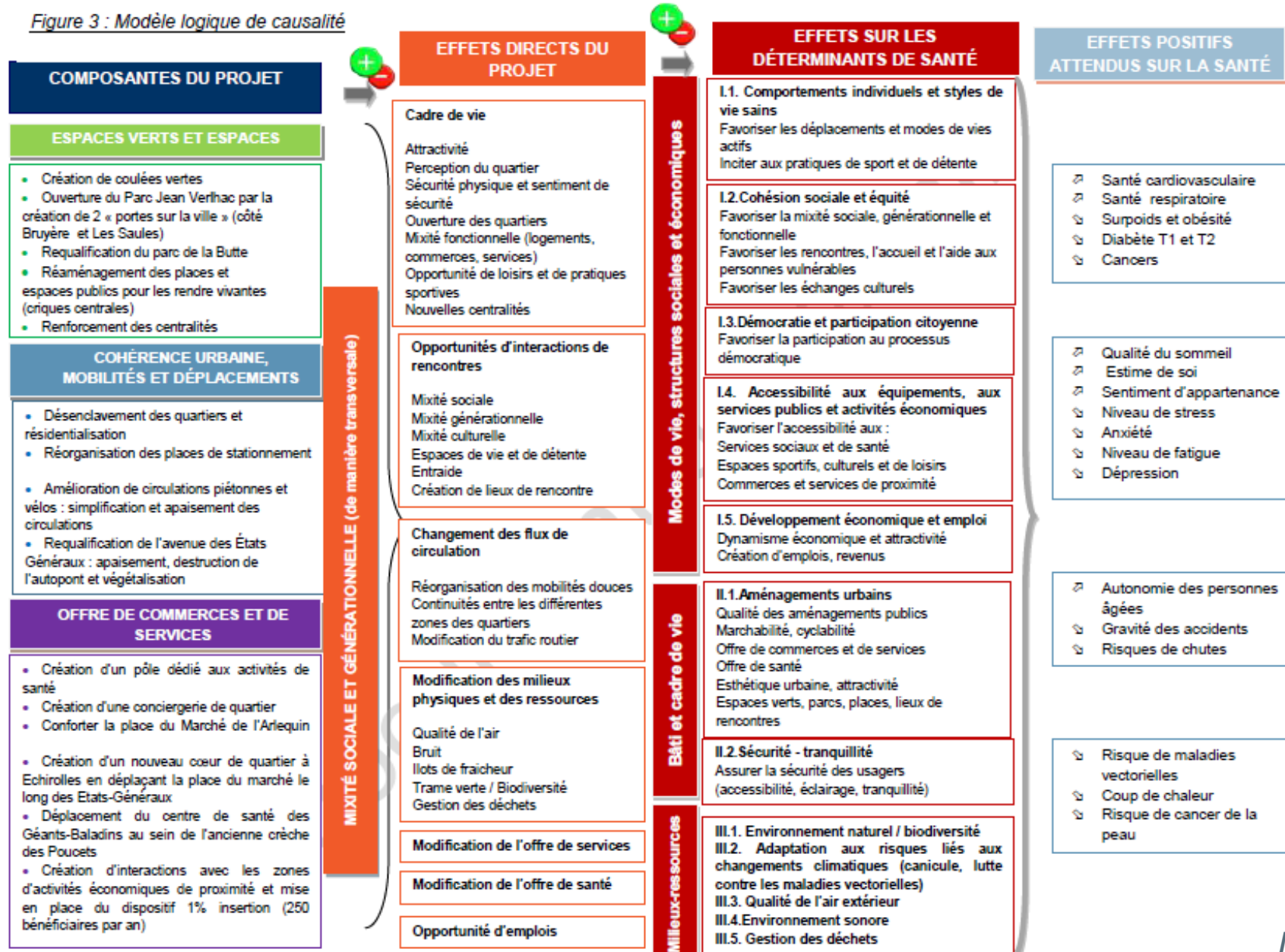
Shops and services



Social cohesion

Figure 3 : Modèle logique de causalité

Conceptual model

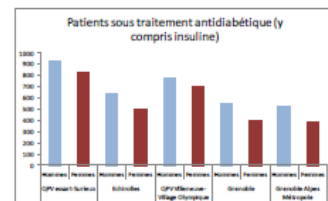


# Assessment

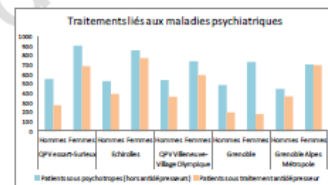
## Population health & socio-demo profile

Les habitants des Villeneuves présentent un contexte socio-sanitaire plutôt défavorisé, avec un taux de pauvreté de plus de 40% et un taux de ménages imposés deux fois moins important que dans la ville de rattachement, les familles monoparentales et les personnes seules sont également plus nombreuses, en particulier les personnes âgées. Le quartier est pourvu d'écoles et de collèges à proximité immédiate, les moins de 20 ans y sont d'ailleurs plus nombreux. Le taux de chômage est supérieur à 20% et de nombreux emplois sont précaires. Le taux de bénéficiaires de la CMUC est deux fois plus important dans ces quartiers et les bénéficiaires d'une complémentaire santé moins nombreux.

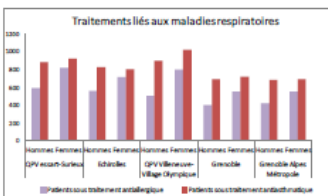
D'ailleurs, en analysant les consommations médicamenteuses, on constate que le nombre de patients sous traitement antidiabétique est significativement plus élevé dans les quartiers des Villeneuves.



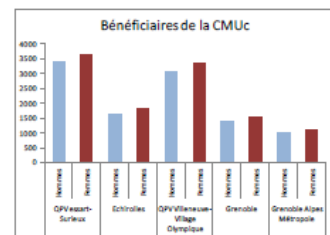
On constate également une consommation régulière d'antidépresseurs particulièrement pour les femmes.



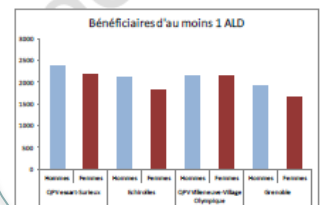
Les maladies respiratoires sont également significativement plus fréquentes chez la femme.



- Disadvantaged socio-sanitary context, with a poverty rate of more than 40%
- Single-parent families and unattached individuals more numerous, particularly the elderly
- Unemployment rate over 20% and many precarious jobs
- Many patients on antidiabetic treatment and antidepressants
- Respiratory diseases especially in women



Le nombre de bénéficiaires d'au moins une affection longue durée (ALD) est également plus important.



## Assessment

### Evidence-based data from literature



Need of quality green and public spaces offering a variety of facilities for better health  
Therapeutic virtues of green spaces, attractiveness will depend on several factors (size, accessibility, aesthetics, equipment and facilities offered, maintenance, sense of security)  
Importance of the choice of plant species and essences (allergies)  
More public spaces, accessible and attractive



Quality infrastructures with good physical characteristics for more active mobility :  
Walkability/cyclability, proximity and density of services



A diversified range of shops and services, in line with the needs and expectations of the inhabitants : creation of new commercial premises and consolidation of public services



Quality of the living environment promote social and intergenerational mix



## Assessment

Thirty individuals and  
focus groups interviews



concerted project with the  
inhabitants with monthly  
thematic workshops

- *Neighbourhood problems generate stress , physical (poor quality of sleep) and psychological (anxiety, fear) fatigue.*
- *Lots are seduced by the "aesthetic" aspect of the program*
- *Arrangements envisaged to increase active and sporting mobility and improve their daily living environment are not their main concerns.*
- *The redevelopment of the parks will make it easier to enjoy them, and "the organization of events and the implementation of sports courses in the park is a good idea"*
- *insecurity and cleanliness problems linked to incivilities have to disappear*
- *Many "do not "see how urban renewal will improve our quality of life and provide solutions to their regular security problems related to rodeos, mass occupation by youth gangs, incivilities and drug traffic*

## **Assessment**

Population health & socio-  
demo profile

Evidence based data from literature

➤ the urban renovation program is likely to have a mix of negative and positive impacts on health, mental health, wellbeing and **social cohesion**



Quality of the living environment promote social and intergenerational mix



## 47 recommendations

### Green and public spaces : 21

- Rely on the uses of public spaces by setting up diagnostics
- Consult different groups of inhabitants on the development of public spaces
- Think about the interconnection between the different health paths set up and support them with indicative and incentive signage
- ...



### Urban design, mobility : 12

- Set aside time for soft modes on Wednesday afternoons or during school holidays by privatizing spaces
- Anticipate travel flows when redesigning avenues
- Introduce "velobus" along the lines of pediatric buses with dedicated premises in schools
- ...

### Access to shops and services : 10



- Create peer employment to support the inhabitants
- Promoting local knowledge
- ...

### Social cohesion : 4



- Pay attention to the "rest to be lived" of the inhabitants of the residences
- Verify that the social and generational mix is taken into account through each recommendation
- ...

## Recommendations

- **Hierarchized** by technical services and elected officials according to four criteria :
  - political portability – cost - technical feasibility - temporality
  - awarding of points : 1 = low ; 2 = average ; 3= high then total
  - the highest score makes the priority of the recommendation
- Will be **included** in the project manager's specifications.
- **Health objectives** of the reference framework **Eco Quartier label** application

innovative

interesting

transversal  
approach  
between the  
cities' services

**HIA allows to open  
doors to cross in  
order to find a  
consensus**

## ***Monitoring***

A follow-up has been initiated  
⇒ identify the **strengths,  
weaknesses, opportunities  
and threats** resulting from the  
implementation of the  
recommendations

# The Villeneuves renovation program HIA



lucie.anzivino@ors-auvergne-rhone-alpes.org

Ville d'Echirolles.fr

Thanks !



Financial support from  
the Grenoble Metropolitan Area  
the cities of Grenoble and Echirolles  
the Regional Health Agency.

