

Institutionalising Health Impact Assessment – learning from the past and looking to the future

Dr Margaret Douglas
Consultant in Public Health, Public Health Scotland
June 2025

Outline

- Some HIA history
 - Tensions and challenges
 - Growth and evolution of HIA practice
 - Recommendations for institutionalisation
-
- **Institutionalisation:** *‘systematic integration of HIA into routine decision making’*



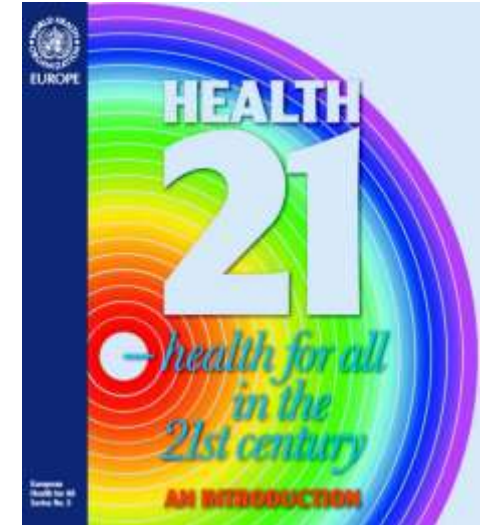
[Elisa Giaccaglia Cobblestone Road Through Stone Arched City Gates CC0](#) via [Pexels](#)

‘Health impact assessment: an idea whose time has come’
Alex Scott-Samuel, 1996

- Prospective assessment of likely consequences for health
- To inform defined policy
- Not risk assessment or economic assessment
- Wide determinants of health

Health 21, 1998

Target 14. Multisectoral responsibility for health

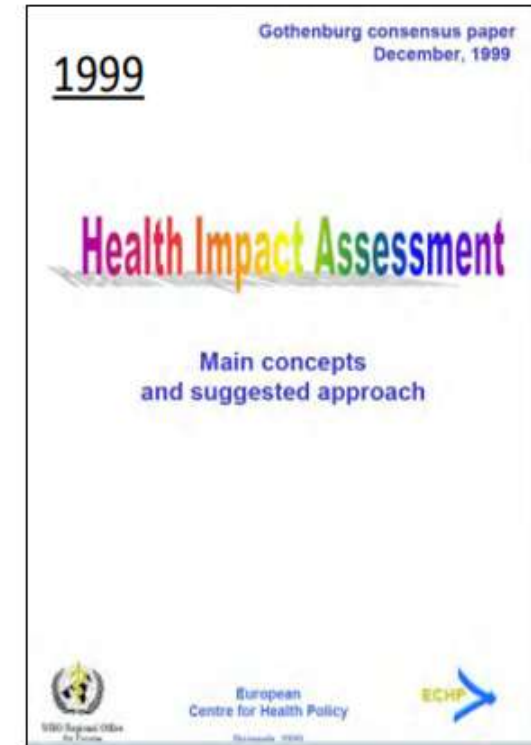


‘An effective approach to health development requires all sectors of society to be accountable for the health impact of their policies and programmes and recognition of the benefits to themselves of promoting and protecting health.

Health impact assessment must therefore be applied to any social and economic policy or programme, as well as development projects, likely to have an effect on health.’

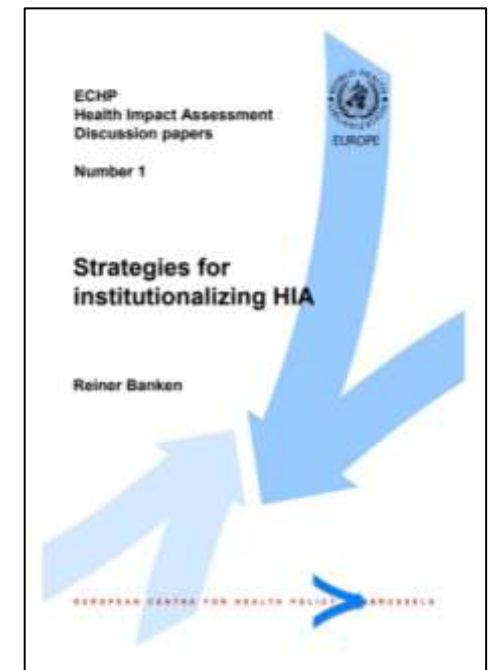


Björn Reilund, [Nordiska hälsovårdshögskolan](#), Göteborg [CC BY-SA 4.0](#), via Wikimedia Commons

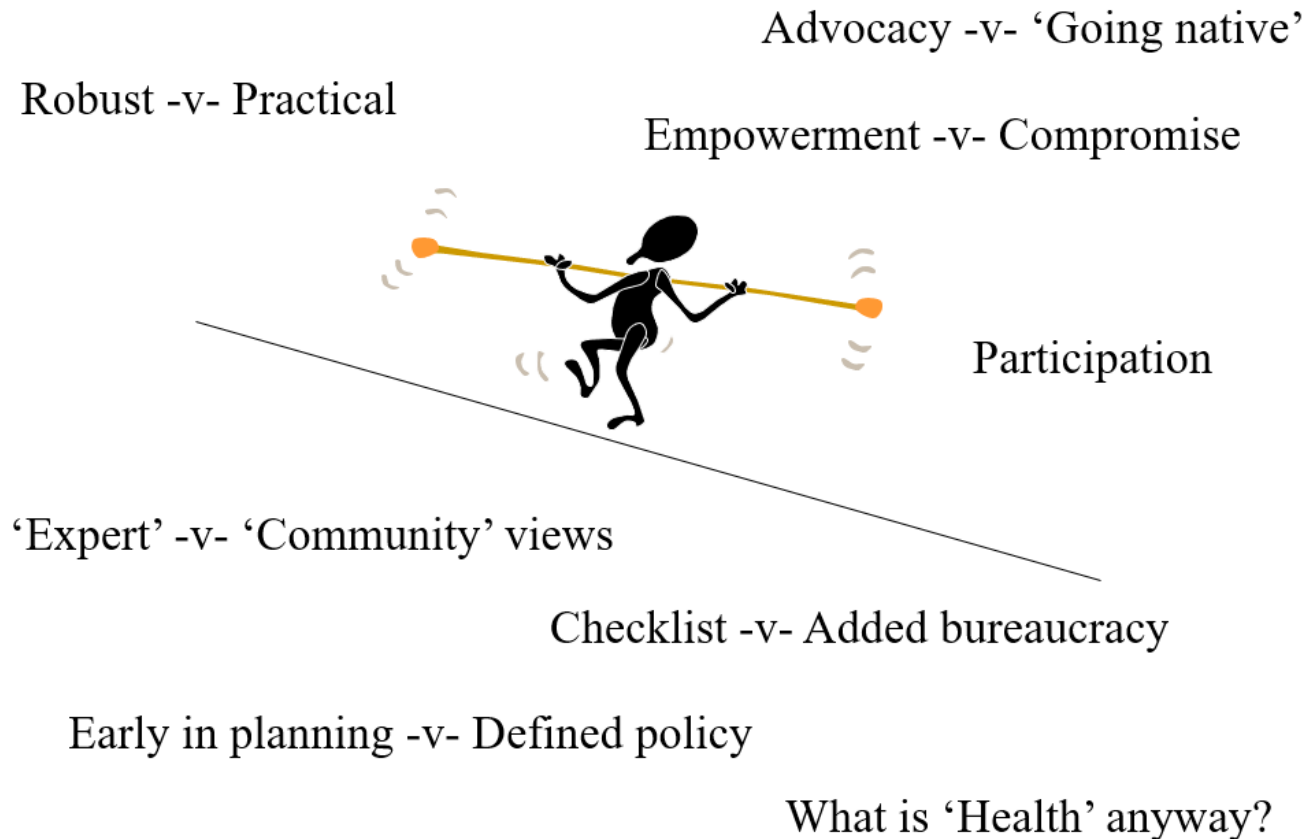


Strategies for institutionalisation, 2001

- Rise and fall of HIA in British Columbia
- Administrative procedures - vulnerable to political change
- Need legal framework to mandate HIA
- Enable non-health actors to implement HIA
- Public health role - knowledge transfer and quality control



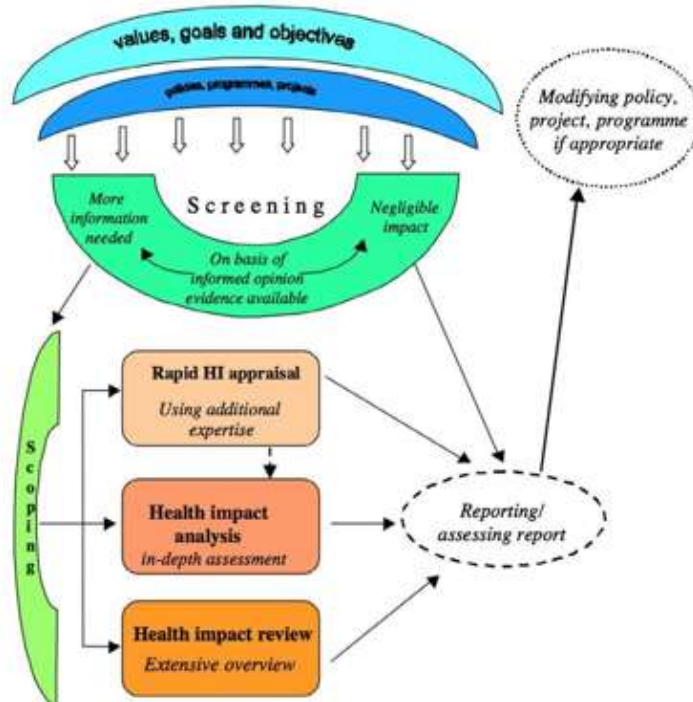
Can we get it right?



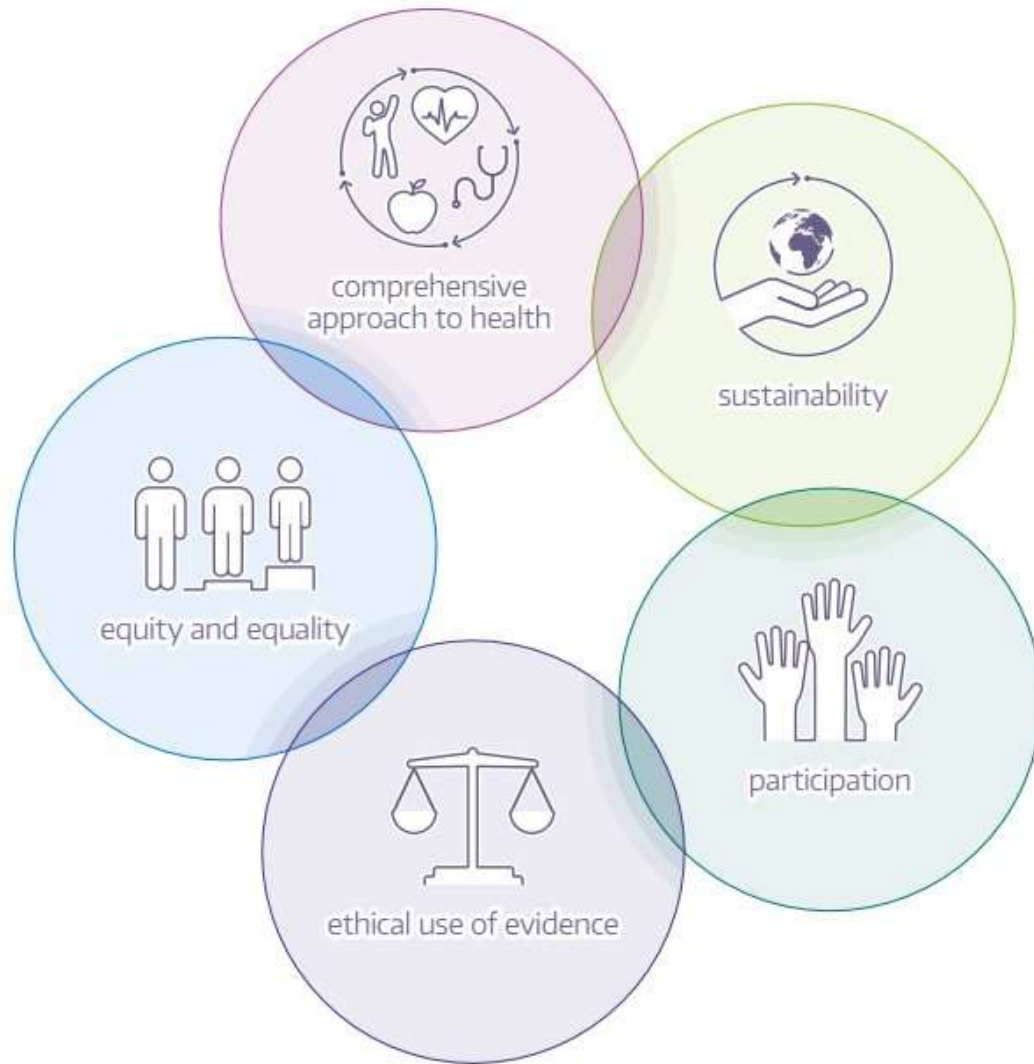


Abundant guidance

An approach to health impact assessment



Consistent process



Consensus on best practice

Types of HIA

To meet a regulatory
requirement –
commissioned



[Regulatory compliance](#) by [Nick Youngson](#) CC BY-SA 3.0 Pix4free

To inform a policy
decision – in-house/ in
partnership



[A Team of People with their Hands Together](#) by [Pavel Danilyuk](#) CC0 Pexels

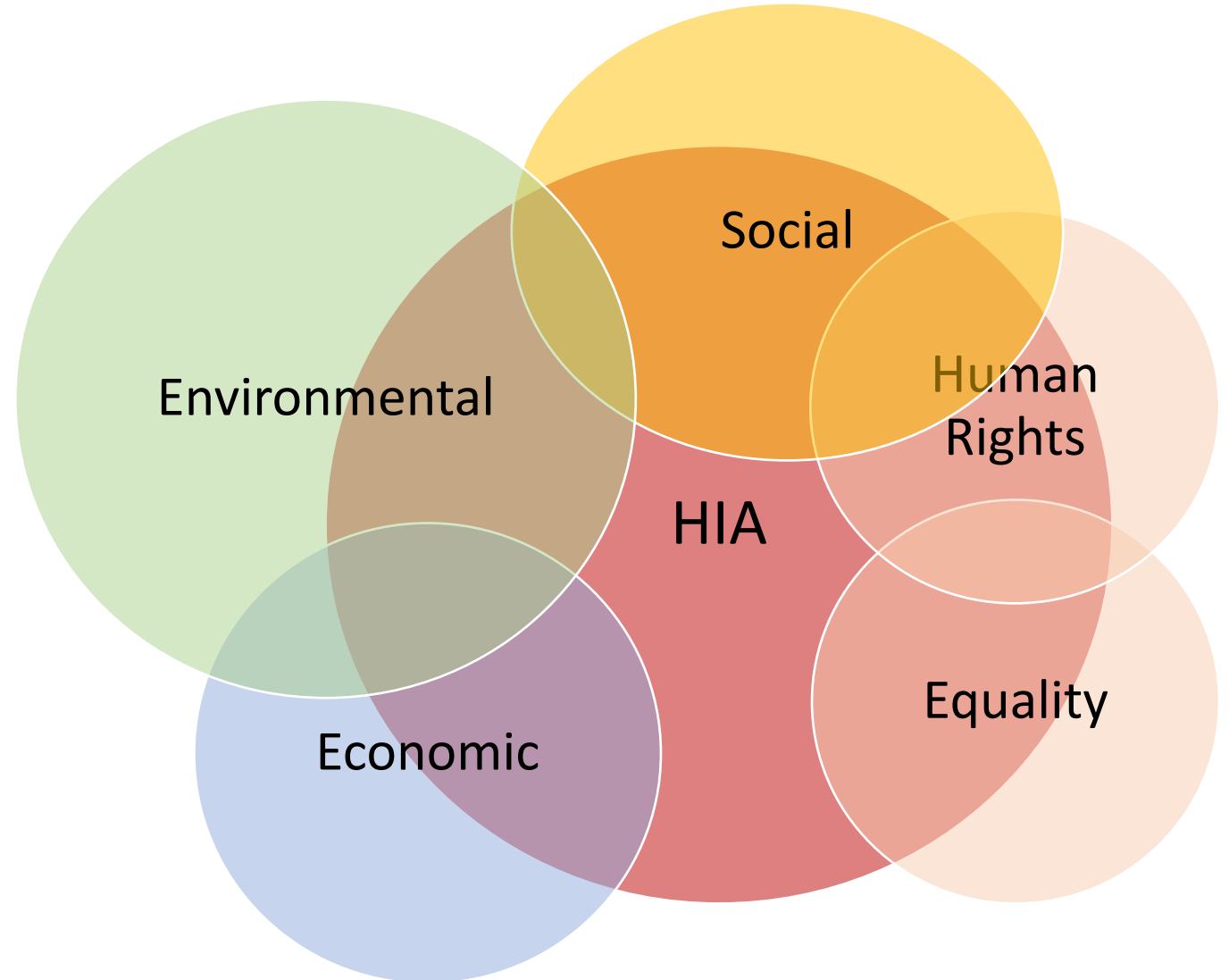
Advocacy /
Community led



[Female Protester using a Megaphone](#) by [Lara Jameson](#) CC0 Pexels

Overlapping assessments

Integrated or standalone HIA?

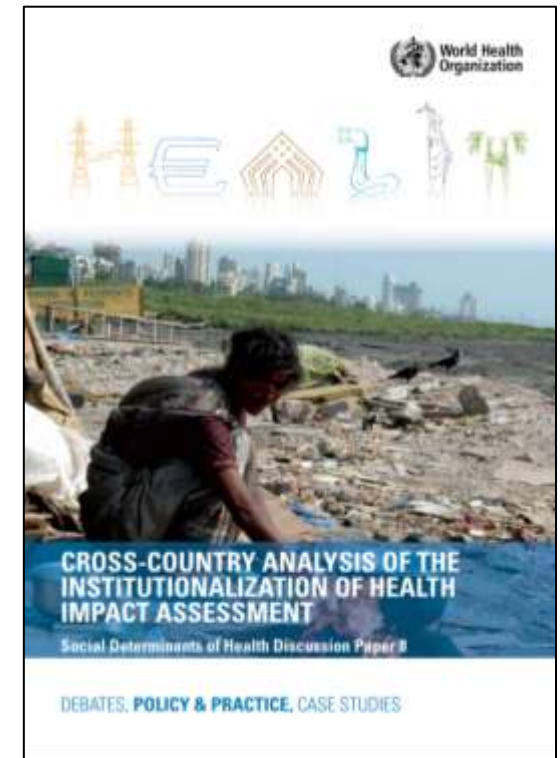


Rise and fall - Integrated Impact Assessment

- Legal requirement for Equality Impact Assessment but not HIA
- Integrated Impact Assessment - met legal requirements and health determinants
- Many IIAs, quality control, audited recommendations
-
- Revised guidance - health determinants removed, to focus solely on legal duties

Cross country analysis of institutionalisation, 2013

- Embed health – legislation
- Clarify how to operationalise
- Build capacity
- Improve cooperation between sectors





Wales

- 2004 - WHIASU – dedicated support and capacity
- Support from Welsh Government
- Guidance, resources, training
- Some high profile HIAs
- 2017 - Public Health (Wales) Act



Scotland

- 2001 - SHIIAN – loose network, no dedicated capacity
- Focus on integration into other IA
- Guidance, resources, training
- Some high profile HIAs
- 2022 – HIASU
- No legal requirement (yet)

Making Health in All Policies a reality, 2024

- Mandatory requirement for HIA
- Long-term funded and dedicated support structure/unit
- Competency framework for HIA upskilling
- Guidance for health in other impact assessments
- Monitoring and HIA methodologies



Lynch et al, 2024

Conclusion

- *‘an idea whose time has come’
- is now the time?*
- Continuity and evolution
- HIA can rise and fall
- Need legal frameworks and dedicated support



[Elisa Giaccaglia Cobblestone Road Through Stone
Arched City Gates CC0 via Pexels](#)

Thank you!

Margaret.douglas3@phs.scot